

The Best of Ecotile.

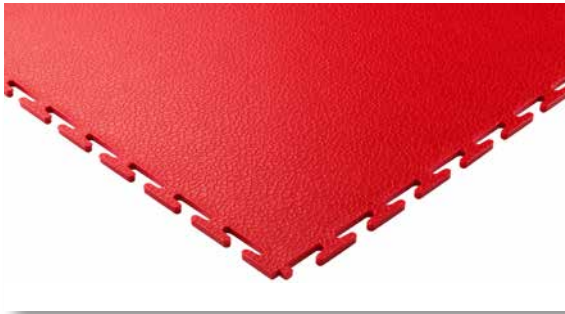
From heavy industry to retail,
and everything in between.



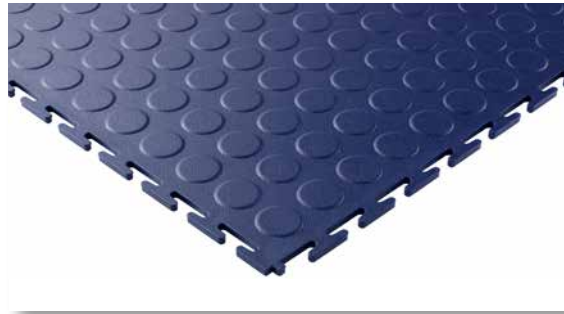
TABLE OF CONTENTS

02	Industrial & Production	09	Heavy-Duty Applications
13	Garages & Workshops	18	ESD & Anti-static
23	Warehouse & Logistics	28	Retail & Commercial
33	Education Applications	35	Sports & Leisure

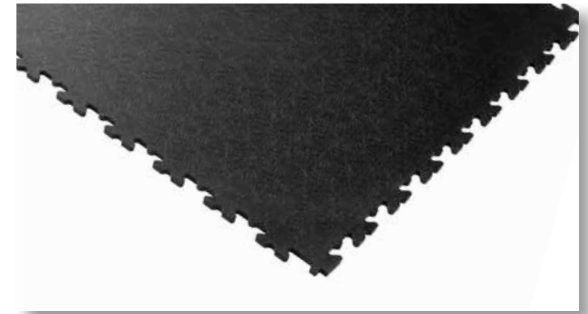
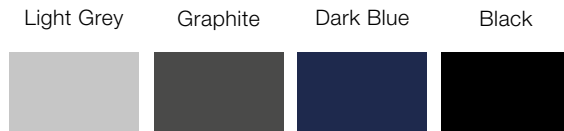




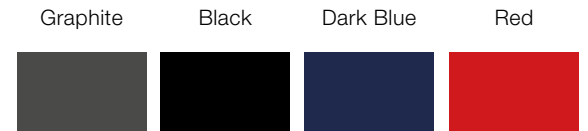
ecotile E500/7mm Thick in Smooth



ecotile E500/7mm Thick in Raised Disk

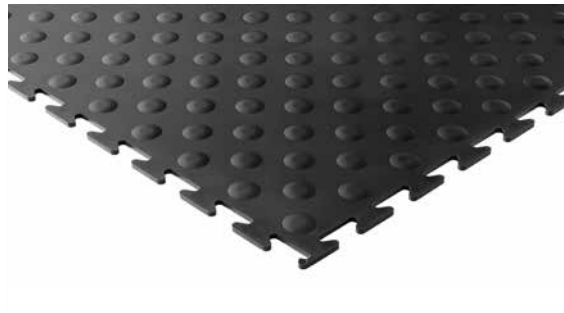


ecotile X500/7mm Thick in X-Joint

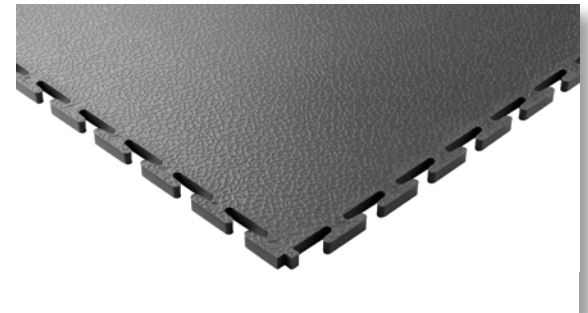
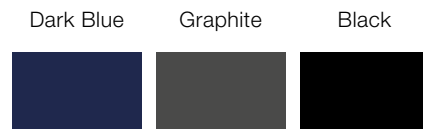


ecotile ESD 7mm Thick

BS EN 61340-5-1 :2016 Compliant



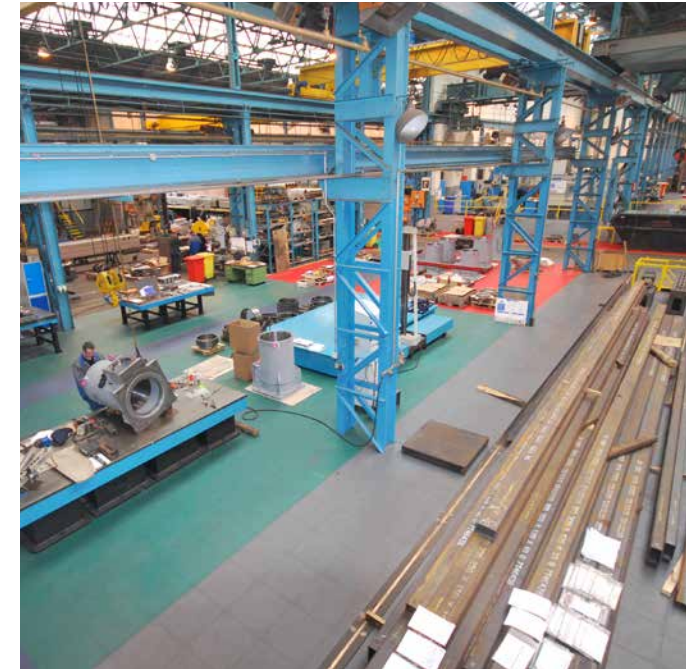
ecotile U500/5mm Thick Utility Tile



ecotile E500/10mm Thick Smooth



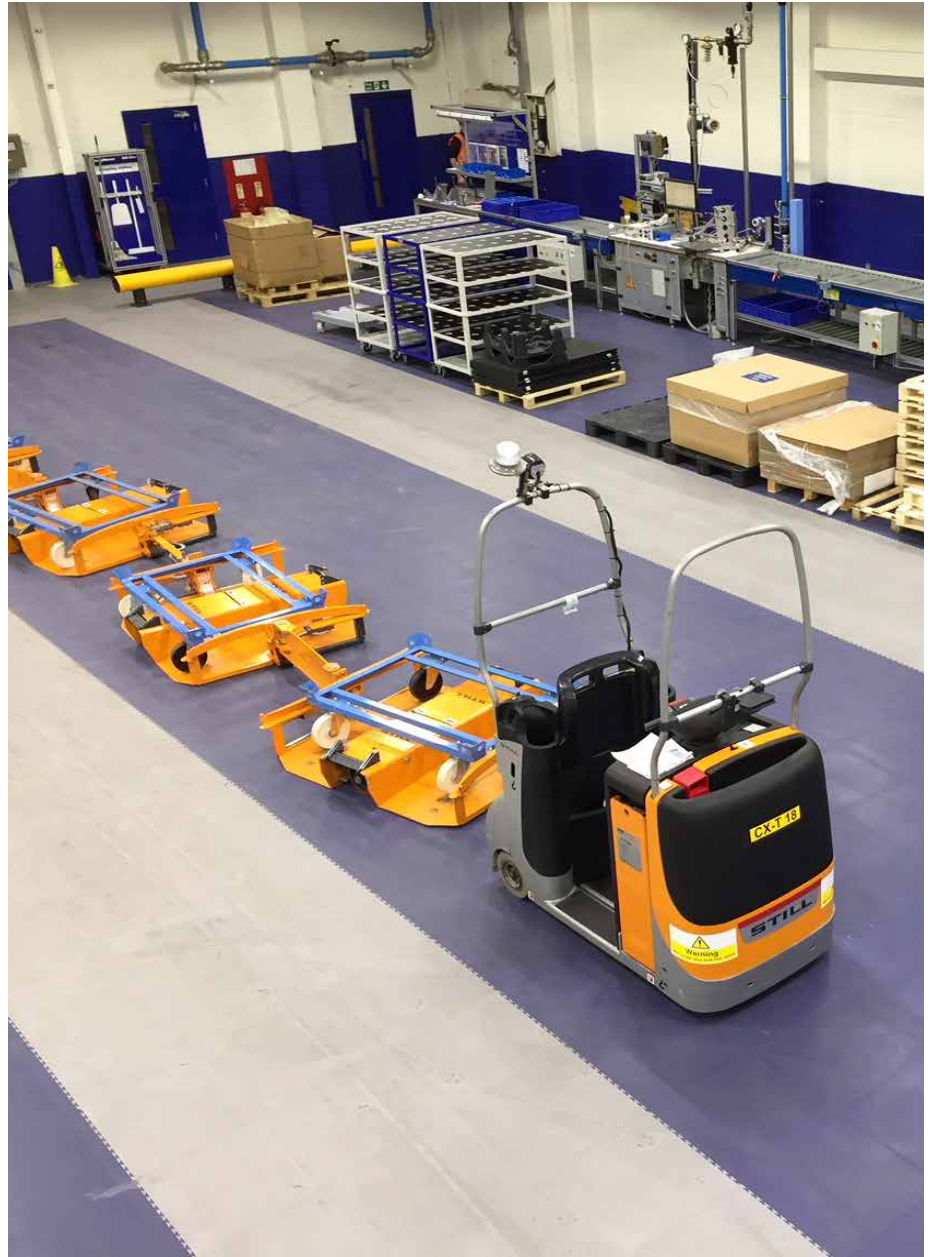
Bespoke/special colours available, enquire for more information.



INDUSTRIAL & PRODUCTION

Businesses like Rolls-Royce, Dennis Eagle and Bosch use Ecotile's hard-wearing and long-lasting flooring solutions to protect subfloors in their production facilities.









All Ecotile solutions are designed to be installed in tough working environments. They're perfect for areas where HGVs, fork-lift trucks and heavy machinery operate.





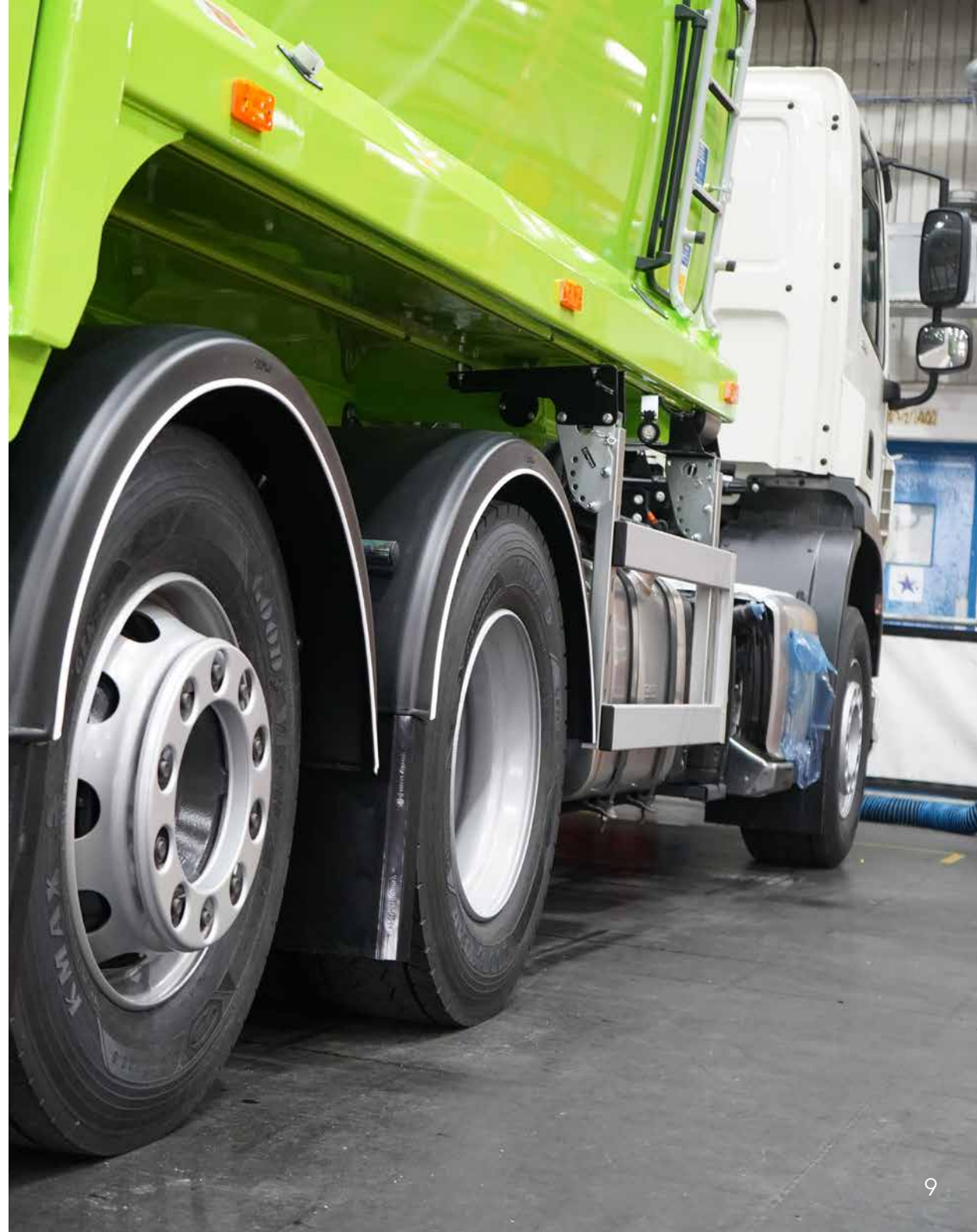
Use Ecotile to create colour-coded work zones and walkways.





HEAVY-DUTY APPLICATIONS

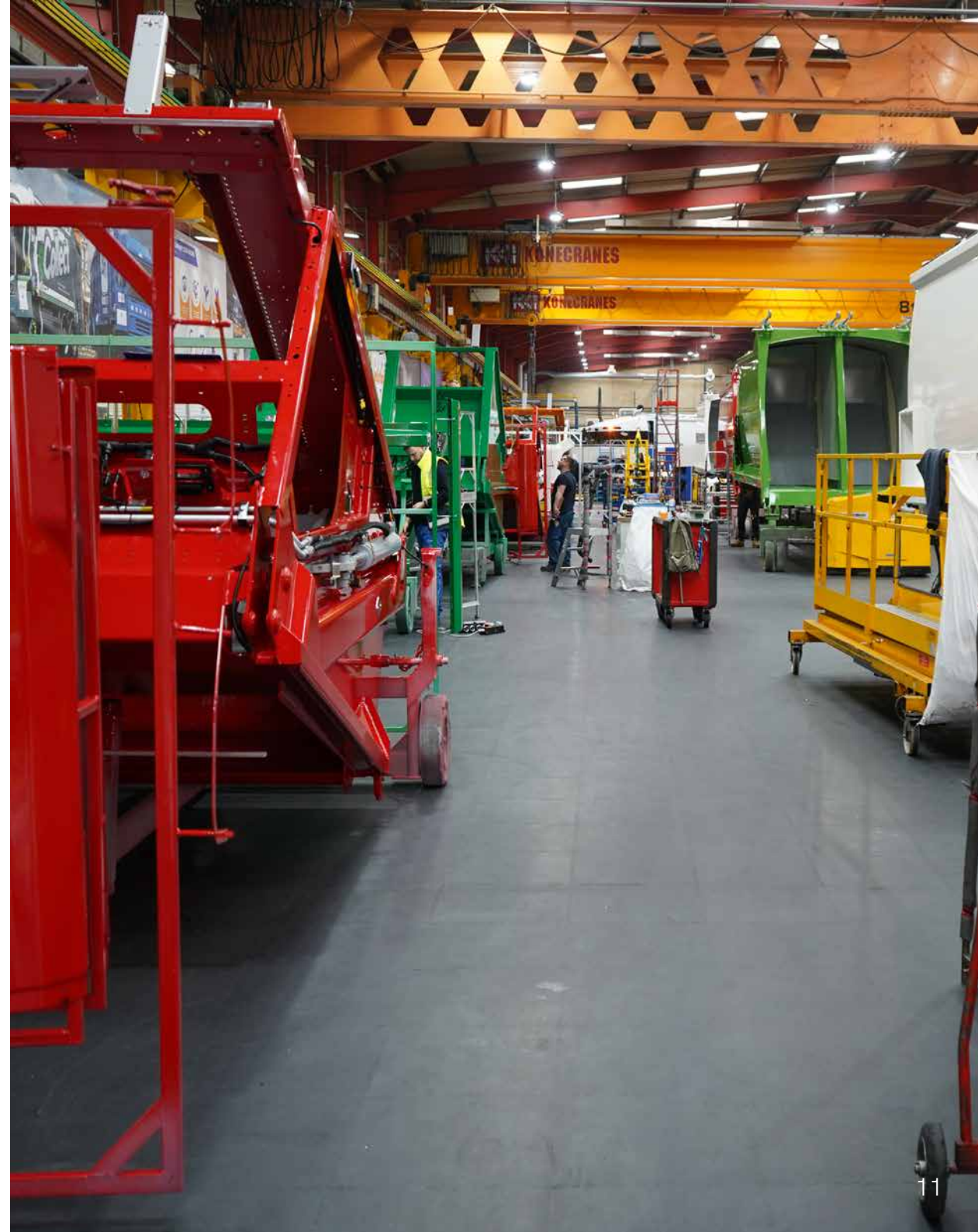
Ecotile manufacture heavy-duty flooring to operate in the most demanding industrial and commercial environments. Our interlocking floor tiles are engineered to protect subfloors, prevent damage, and increase safety for employees.







Covering worn subfloors with Ecotile reduces slips and trips. Not to mention preventing forklift accidents on uneven and crumbling floors. A fire-retardant rating of Bfl-S1 class 1 and an R10 slip rating enhances safety in industrial premises.





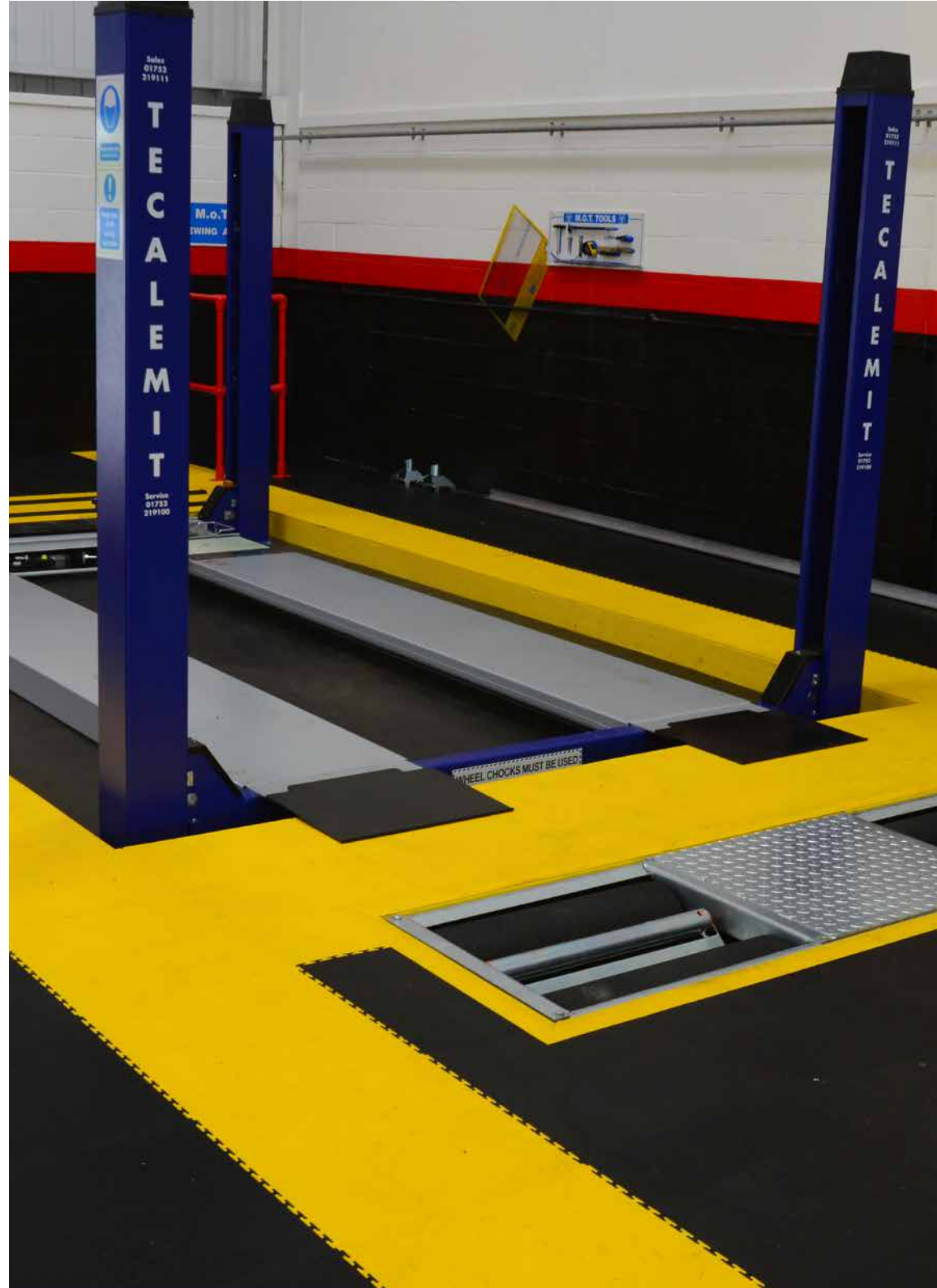


COMMERCIAL GARAGES / WORKSHOPS

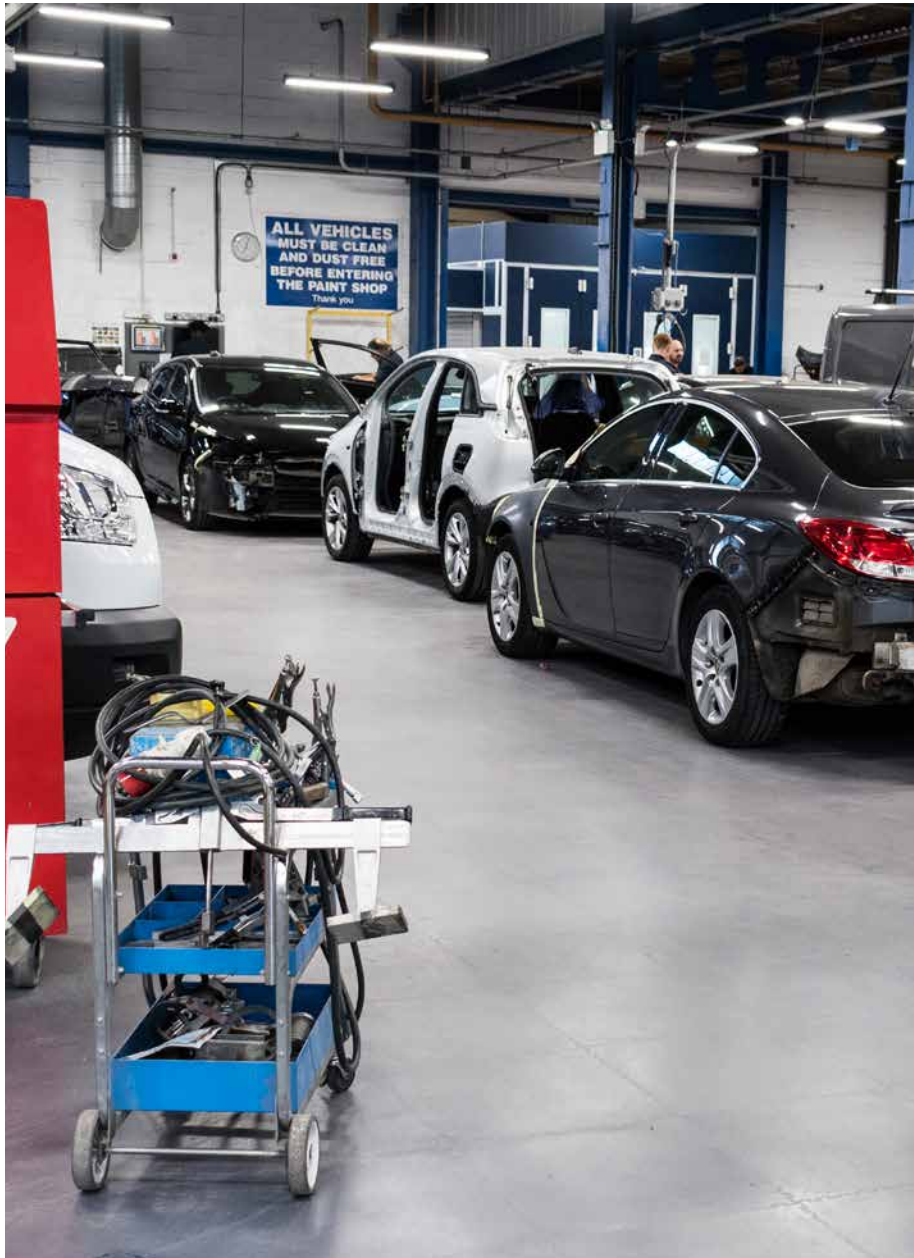
Choosing Ecotile means you can avoid the cost of continually repainting or repairing damaged and worn concrete in your commercial garage.



Create VOSA approved safety markings around MoT test bays.



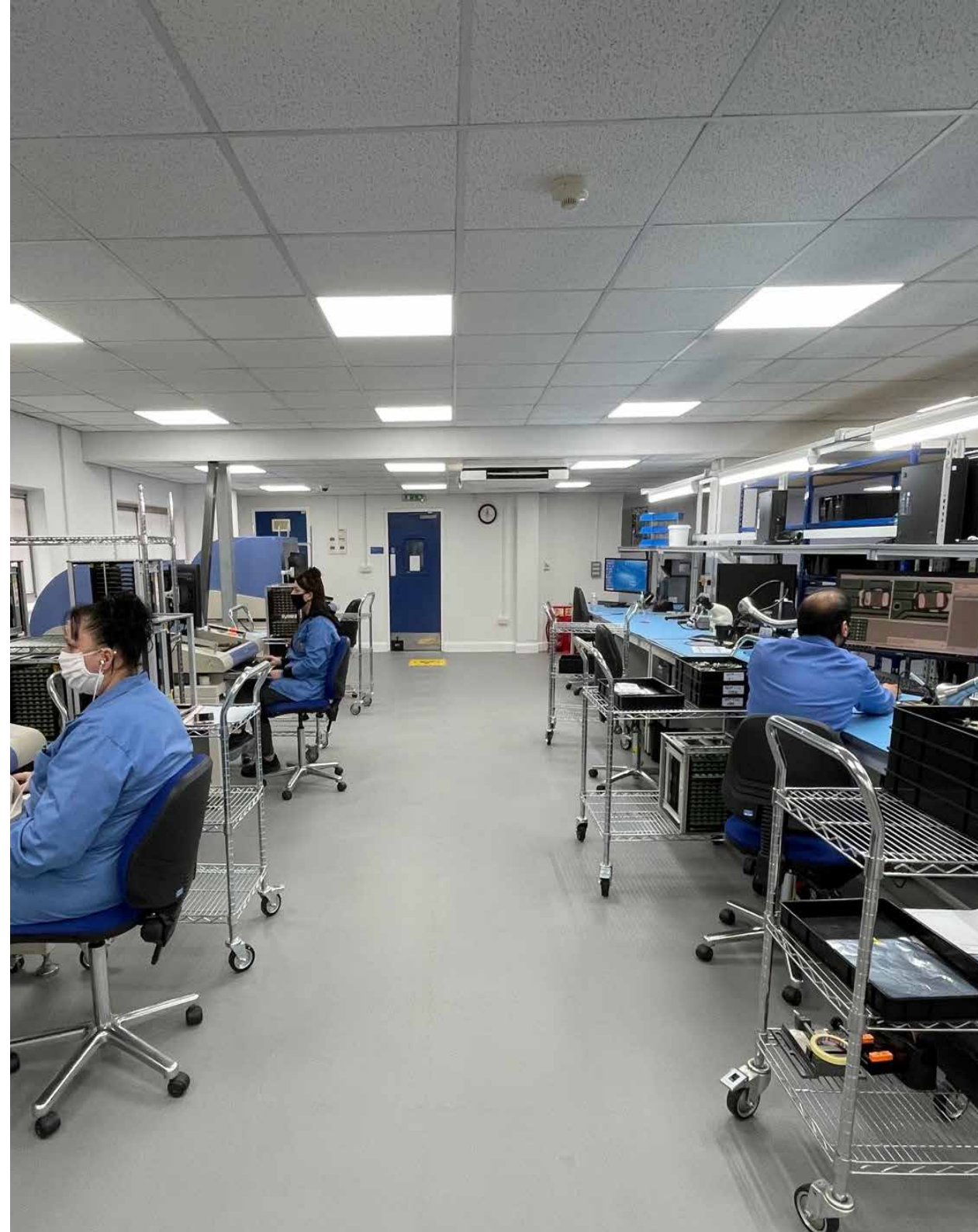






ESD AND ANTI-STATIC

Trusted and specified by the MoD, Ecotile produce a range of high performance static-dissipative floor tiles that protect microelectronics, static-sensitive devices and explosives from damage caused by static discharge.











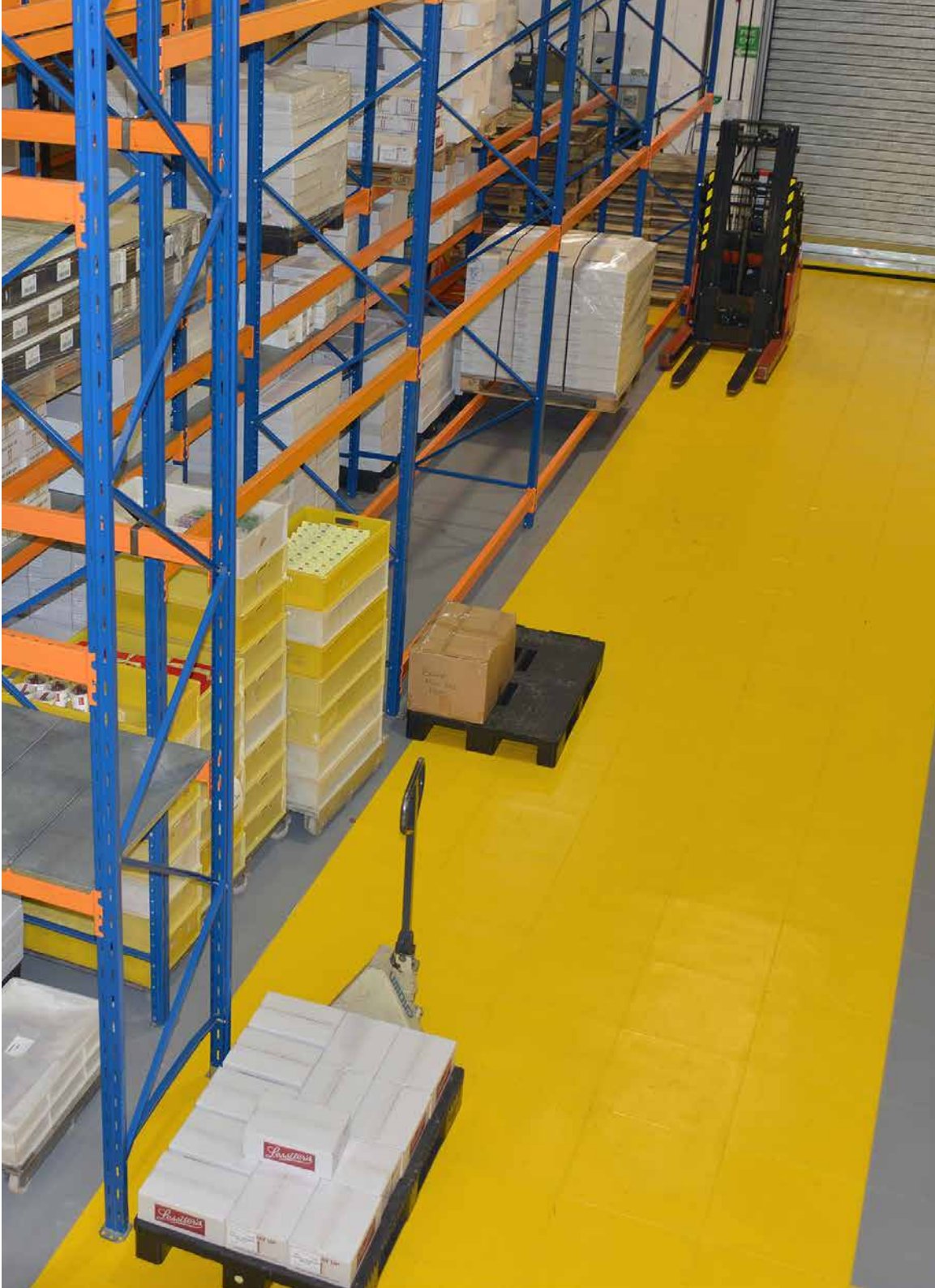


WAREHOUSE AND LOGISTICS

Hardwearing, tough and easy to maintain. Our warehouse floor tiles are designed to withstand the day to day rigours of fork trucks, pallet trucks, stillages and heavy loads. Not to mention improving comfort and reducing fatigue for employees.

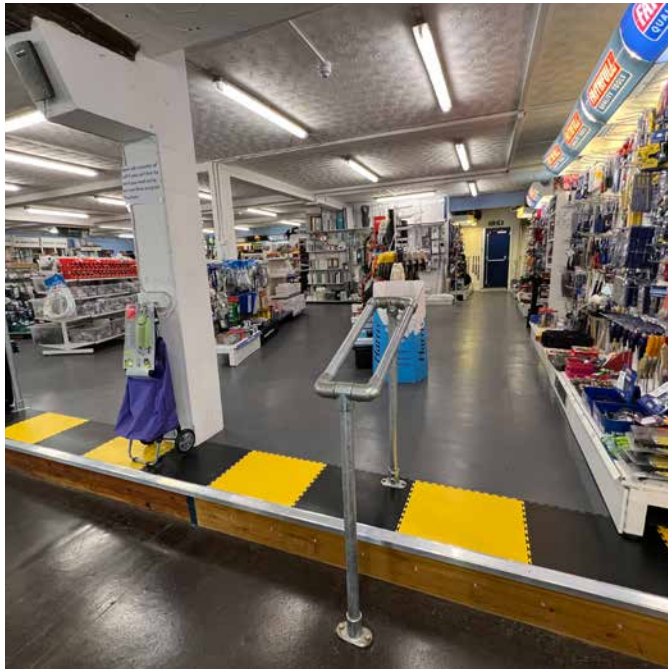






Create walkways and safety zones to meet HSE guidelines.



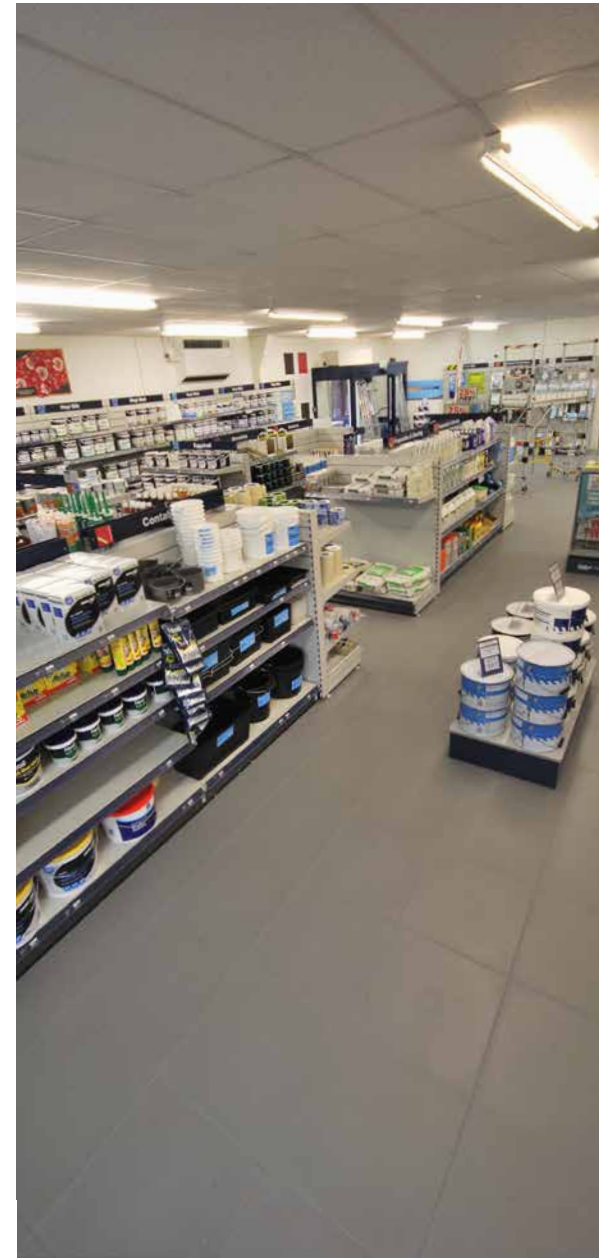


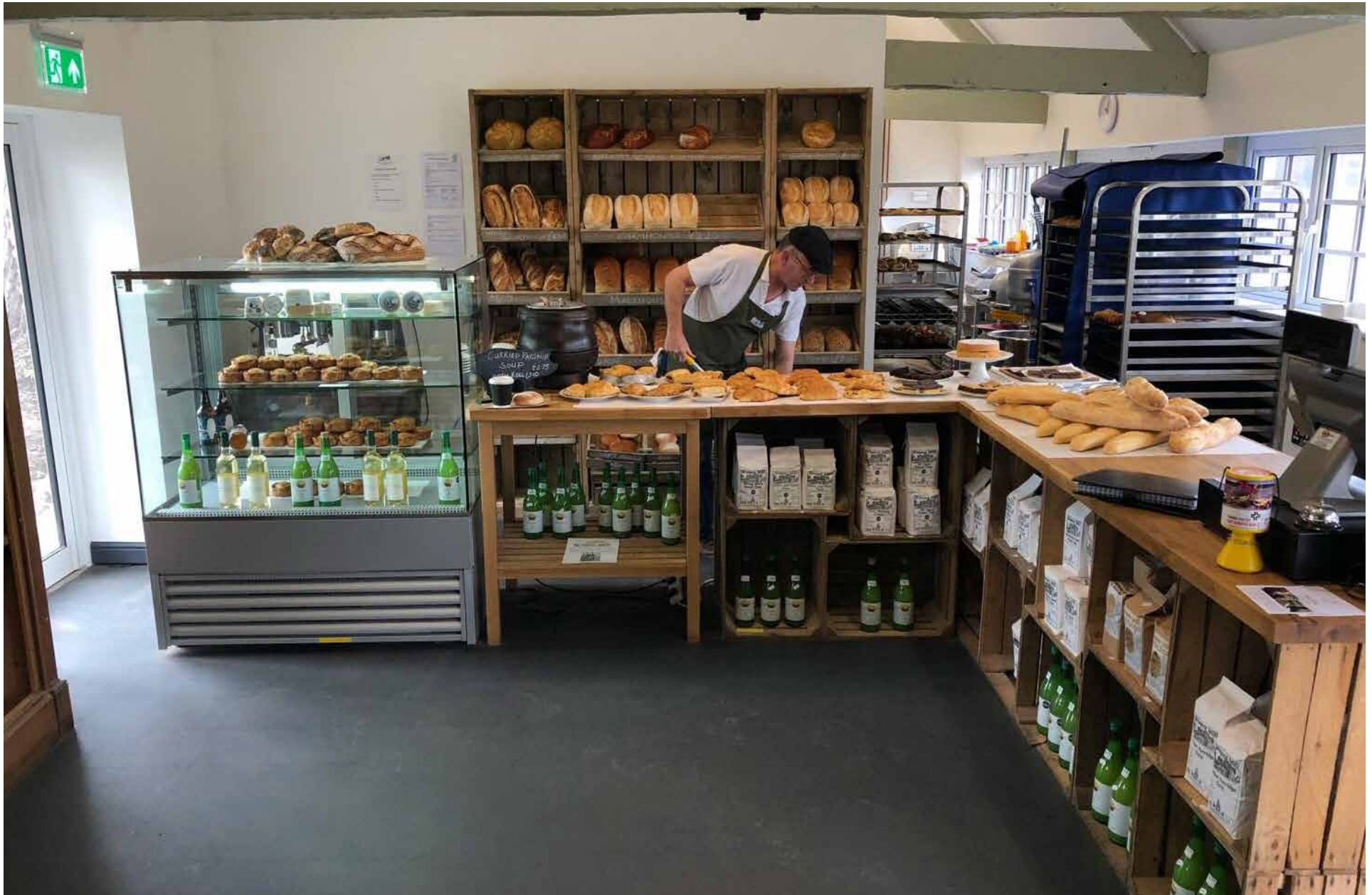
RETAIL AND COMMERCIAL

Attractive and hard wearing, Ecotile offers a retail flooring solution that is quick and easy to install, with minimum disruption. And without the need for expensive screeds and adhesives.













SCHOOLS AND COLLEGES

Ecotile is an ideal solution for a wide range of areas within schools, including high-foot traffic areas like corridors and classrooms.

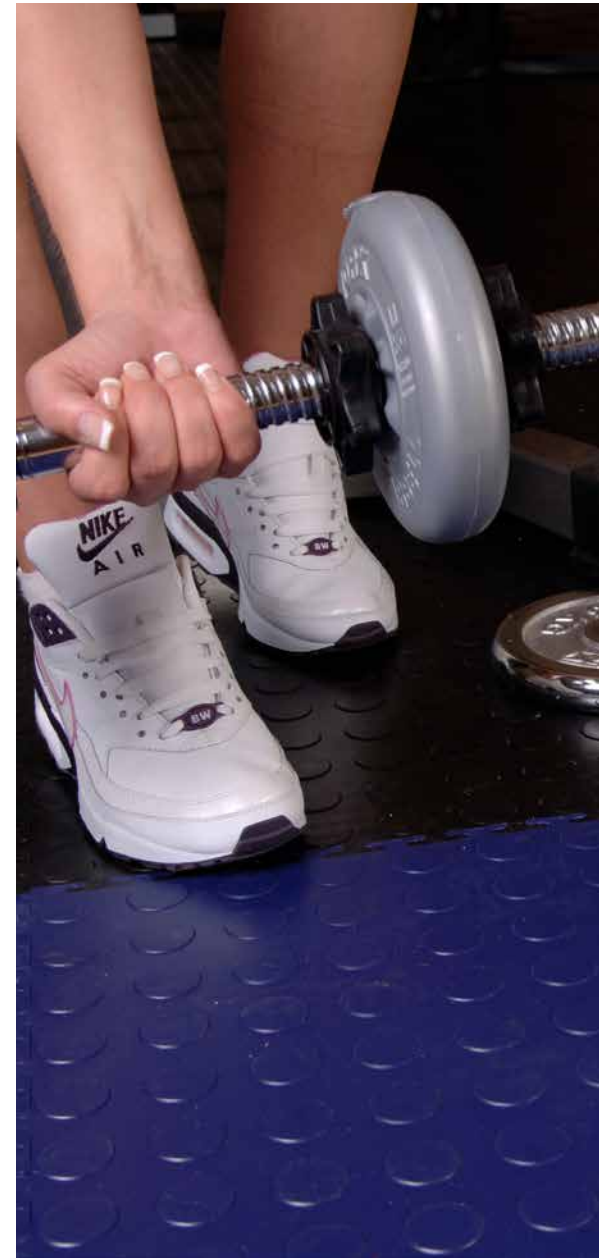
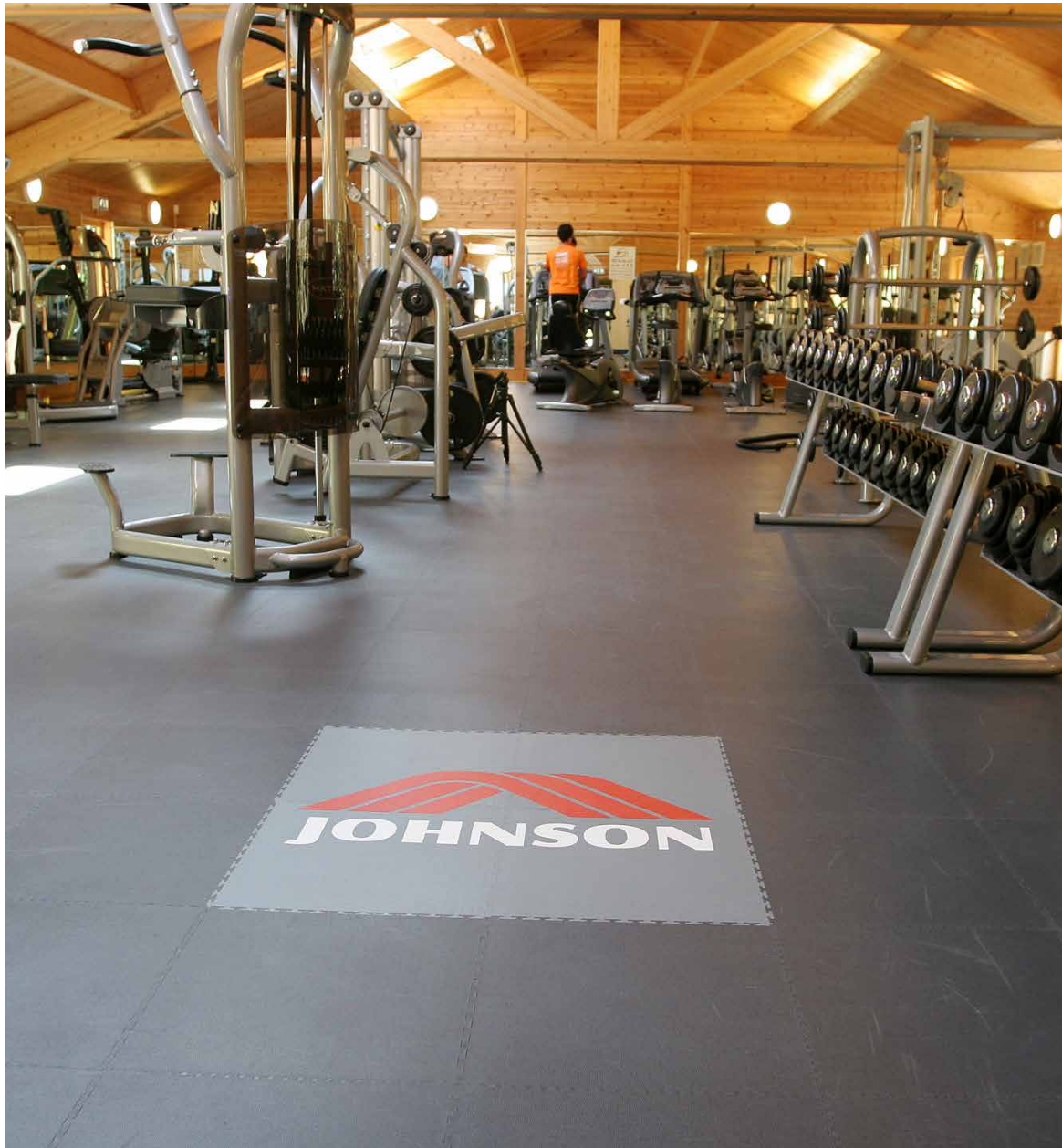




SPORTS AND LEISURE

At Ecotile, we manufacture highly durable, low maintenance and attractive flooring solutions to transform home or commercial gyms into a safe and effective training facility.











Made in Britain

Ecotile is proudly made in Britain, by us. So, we can guarantee short lead times, with tiles always in stock. Our Bedfordshire ISO-accredited facility operates to the highest quality standards.



Guaranteed Quality

Ecotile is certified to meet exacting technical specifications. Whether it's chemical resistance, slip resistance, or VOC emissions, we have all the relevant certifications to provide businesses with peace of mind.



Fly through installation

Designed to be loose-laid, Ecotile is quick and simple to install in just a few hours. Perfect for businesses who can't afford to stop. They can be fitted in sections, allowing you to continue operations during installation.



Sustainable. As standard.

All Ecotile interlocking floor tiles are manufactured from 100% recyclable materials. So, at the end of their useful life, they can be returned to Ecotile and used to make our range of recycled tiles.

Strength. Quality. Trust.



Proud to be an award winning British manufacturer.

Phone: 01582 788 232

Email: enquiries@ecotileflooring.com

Website: www.ecotileflooring.com

Head Office, Factory & Showroom
Unit 15 North Luton Industrial Estate,
Sedgwick Road, Luton, LU4 9DT

Follow us on
LinkedIn

